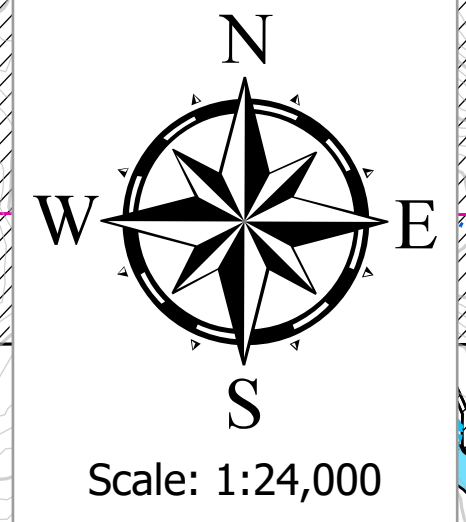
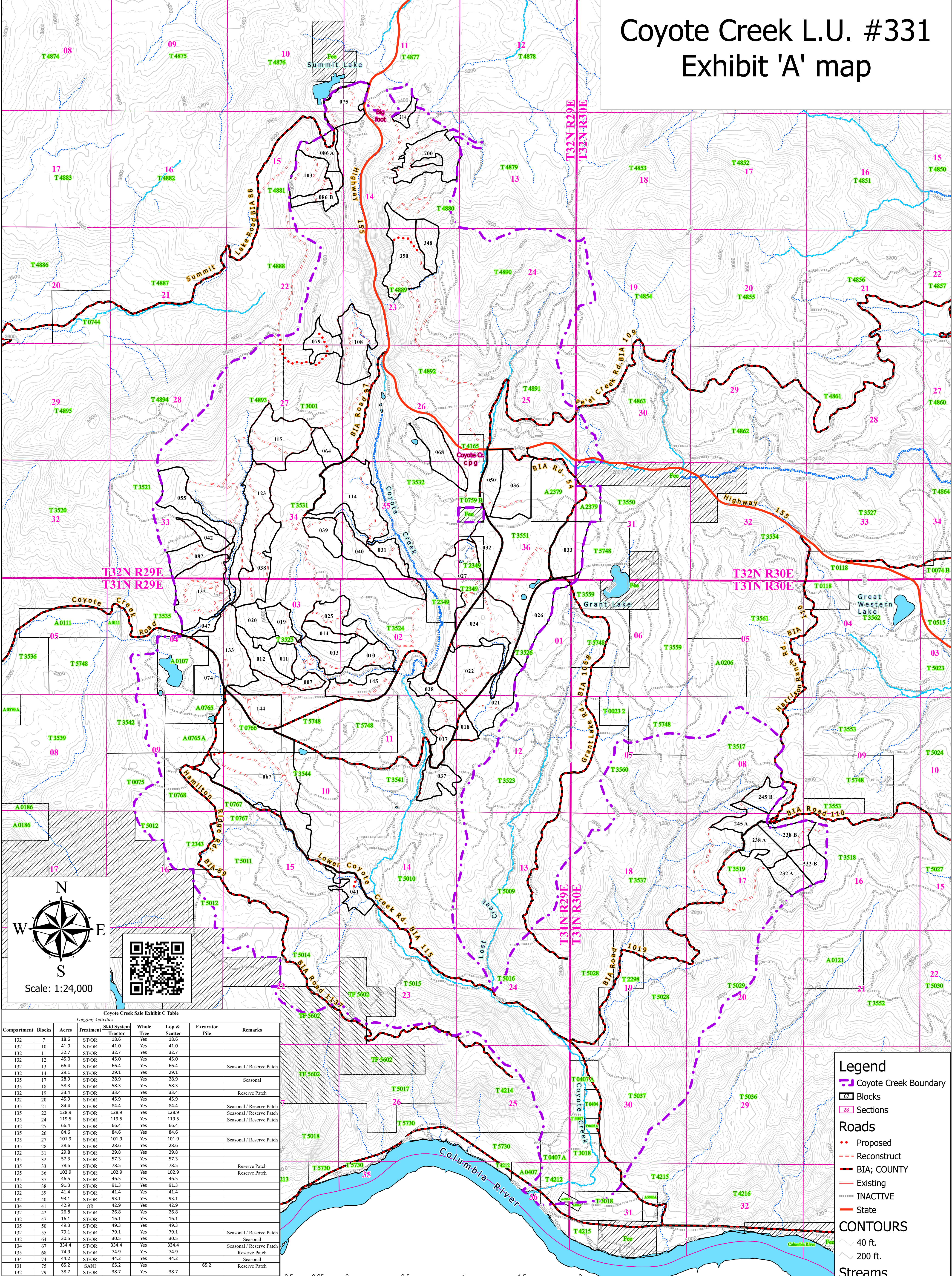


Coyote Creek L.U. #331 Exhibit 'A' map



Coyote Creek Sale Exhibit C Table

Compartment	Blocks	Acres	Treatment	Skid System Tractor	Whole Tree	Lop & Scatter	Excavator Pile	Remarks
132	7	18.6	ST/OR	18.6	Yes	18.6		
132	10	41.0	ST/OR	41.0	Yes	41.0		
132	11	32.7	ST/OR	32.7	Yes	32.7		
132	12	45.0	ST/OR	45.0	Yes	45.0		
132	13	66.4	ST/OR	66.4	Yes	66.4		Seasonal / Reserve Patch
132	14	29.1	ST/OR	29.1	Yes	29.1		Seasonal
135	17	28.9	ST/OR	28.9	Yes	28.9		Seasonal
135	18	58.3	ST/OR	58.3	Yes	58.3		Reserve Patch
132	19	35.4	ST/OR	35.4	Yes	35.4		Reserve Patch
132	20	45.9	ST/OR	45.9	Yes	45.9		Seasonal / Reserve Patch
135	21	84.4	ST/OR	84.4	Yes	84.4		Seasonal / Reserve Patch
135	22	128.9	ST/OR	128.9	Yes	128.9		Seasonal / Reserve Patch
135	24	119.5	ST/OR	119.5	Yes	119.5		Seasonal / Reserve Patch
132	25	66.4	ST/OR	66.4	Yes	66.4		Seasonal / Reserve Patch
135	26	84.6	ST/OR	84.6	Yes	84.6		Seasonal / Reserve Patch
135	27	101.9	ST/OR	101.9	Yes	101.9		Seasonal / Reserve Patch
132	28	28.6	ST/OR	28.6	Yes	28.6		Seasonal / Reserve Patch
132	31	29.8	ST/OR	29.8	Yes	29.8		Seasonal / Reserve Patch
135	32	57.3	ST/OR	57.3	Yes	57.3		Reserve Patch
135	33	78.5	ST/OR	78.5	Yes	78.5		Reserve Patch
135	36	102.9	ST/OR	102.9	Yes	102.9		Reserve Patch
135	37	46.5	ST/OR	46.5	Yes	46.5		Reserve Patch
132	38	91.3	ST/OR	91.3	Yes	91.3		Reserve Patch
132	39	41.4	ST/OR	41.4	Yes	41.4		Reserve Patch
132	40	93.1	ST/OR	93.1	Yes	93.1		Reserve Patch
134	41	42.9	OR	42.9	Yes	42.9		Reserve Patch
132	42	26.8	ST/OR	26.8	Yes	26.8		Reserve Patch
132	47	16.1	ST/OR	16.1	Yes	16.1		Reserve Patch
135	50	49.3	ST/OR	49.3	Yes	49.3		Reserve Patch
132	55	79.1	ST/OR	79.1	Yes	79.1		Reserve Patch
132	64	30.5	ST/OR	30.5	Yes	30.5		Reserve Patch
134	67	334.4	ST/OR	334.4	Yes	334.4		Reserve Patch
135	68	74.9	ST/OR	74.9	Yes	74.9		Reserve Patch
134	74	44.2	ST/OR	44.2	Yes	44.2		Reserve Patch
131	75	65.2	SANI	65.2	Yes	65.2		Reserve Patch
132	79	38.7	ST/OR	38.7	Yes	38.7		Reserve Patch
137	086 A	41.7	RRT	41.7	Yes	41.7		Reserve Patch
137	086 B	37.0	RRT	37.0	Yes	37.0		Reserve Patch
132	87	49.0	ST/OR	49.0	Yes	49.0		Reserve Patch
132	103	64.4	ST/OR	64.4	Yes	64.4		Reserve Patch
132	108	102.8	ST/OR	102.8	Yes	102.8		Reserve Patch
132	114	156.5	ST/OR	156.5	Yes	156.5		Reserve Patch
132	115	121.1	ST/OR	121.1	Yes	121.1		Reserve Patch
132	123	112.2	ST/OR	112.2	Yes	112.2		Reserve Patch
132	132	135.0	ST/OR	135.0	Yes	135.0		Reserve Patch
132	133	106.2	ST/OR	106.2	Yes	106.2		Reserve Patch
132	144	59.6	ST/OR	59.6	Yes	59.6		Reserve Patch
132	145	58.1	ST/OR	58.1	Yes	58.1		Reserve Patch
141	214	13.2	ST/OR	13.2	Yes	13.2		Reserve Patch
137	232 A	43.4	RRT	43.4	Yes	43.4		Reserve Patch
137	232 B	42.1	RRT	42.1	Yes	42.1		Reserve Patch
137	238 A	47.2	RRT	47.2	Yes	47.2		Reserve Patch
137	238 B	49.6	RRT	49.6	Yes	49.6		Reserve Patch
137	245 A	39.7	RRT	39.7	Yes	39.7		Reserve Patch
137	245 B	36.0	RRT	36.0	Yes	36.0		Reserve Patch
138	348	41.4	ST/OR	41.4	Yes	41.4		Reserve Patch
138	350	114.6	ST/OR	114.6	Yes	114.6		Reserve Patch
141	700	96.1	ST/OR	96.1	Yes	96.1		Reserve Patch
Totals		3,923.3		3,923.3		3,521.5	401.9	

OR - Overstory Removal
RRT - Regeneration with Reserve Trees
SANI - Sanitation
ST/OR - Seed Tree / Overstory Removal

Seasonal
Frozen - December - February
Frozen is for soil protection

Reserve Patch
Two contiguous acres designed to provide areas of escape, hiding and thermal cover for big game and other wildlife species.

Legend

- Coyote Creek Boundary
- Blocks
- Sections

Roads

- Proposed
- Reconstruct
- BIA; COUNTY
- Existing
- INACTIVE
- State

CONTOURS

- 40 ft.
- 200 ft.

Streams

- Type I
- Type II
- Type III
- Type IV

Lakes

- Lake/pond

Ownership

- Allotment Trust
- Private Fee
- Tribal Fee
- Tribal Reserve
- Tribal Trust

Confederated Tribes of the Colville Reservation / Colville Tribal Forestry / Omak - Nespelem Forestry Presales Department

