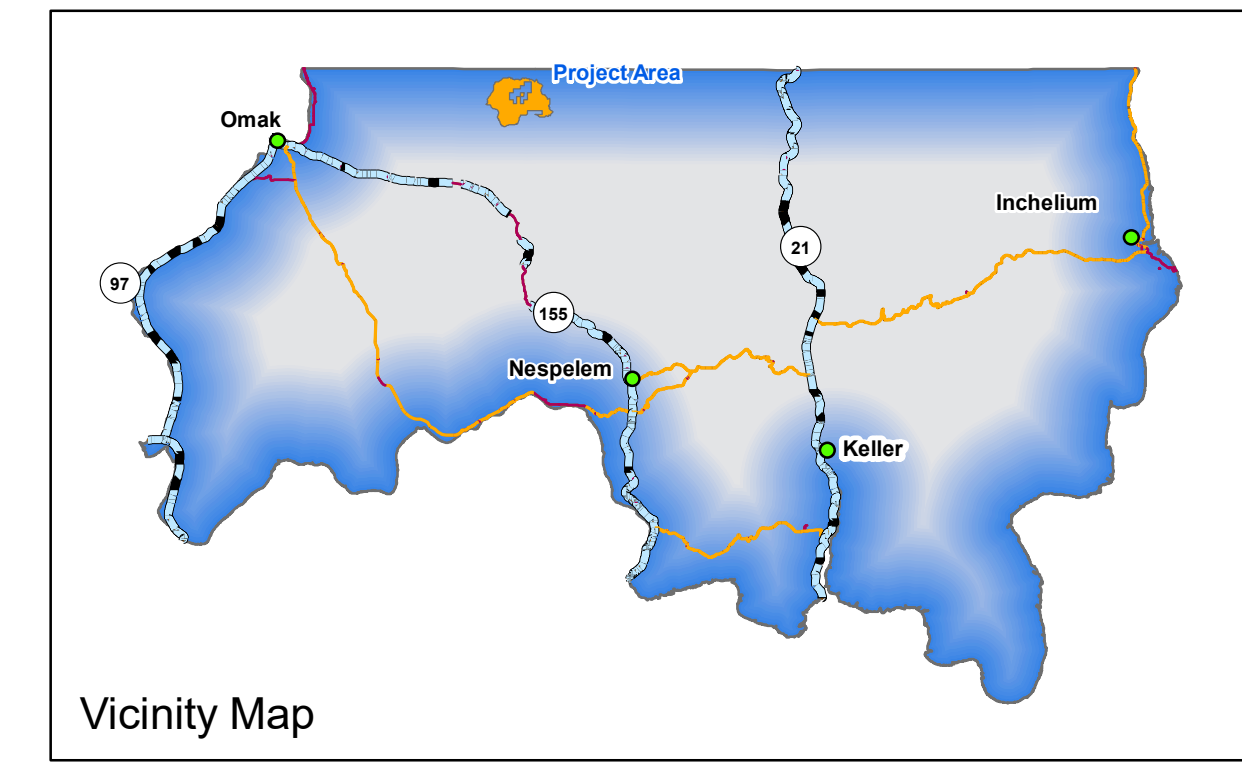
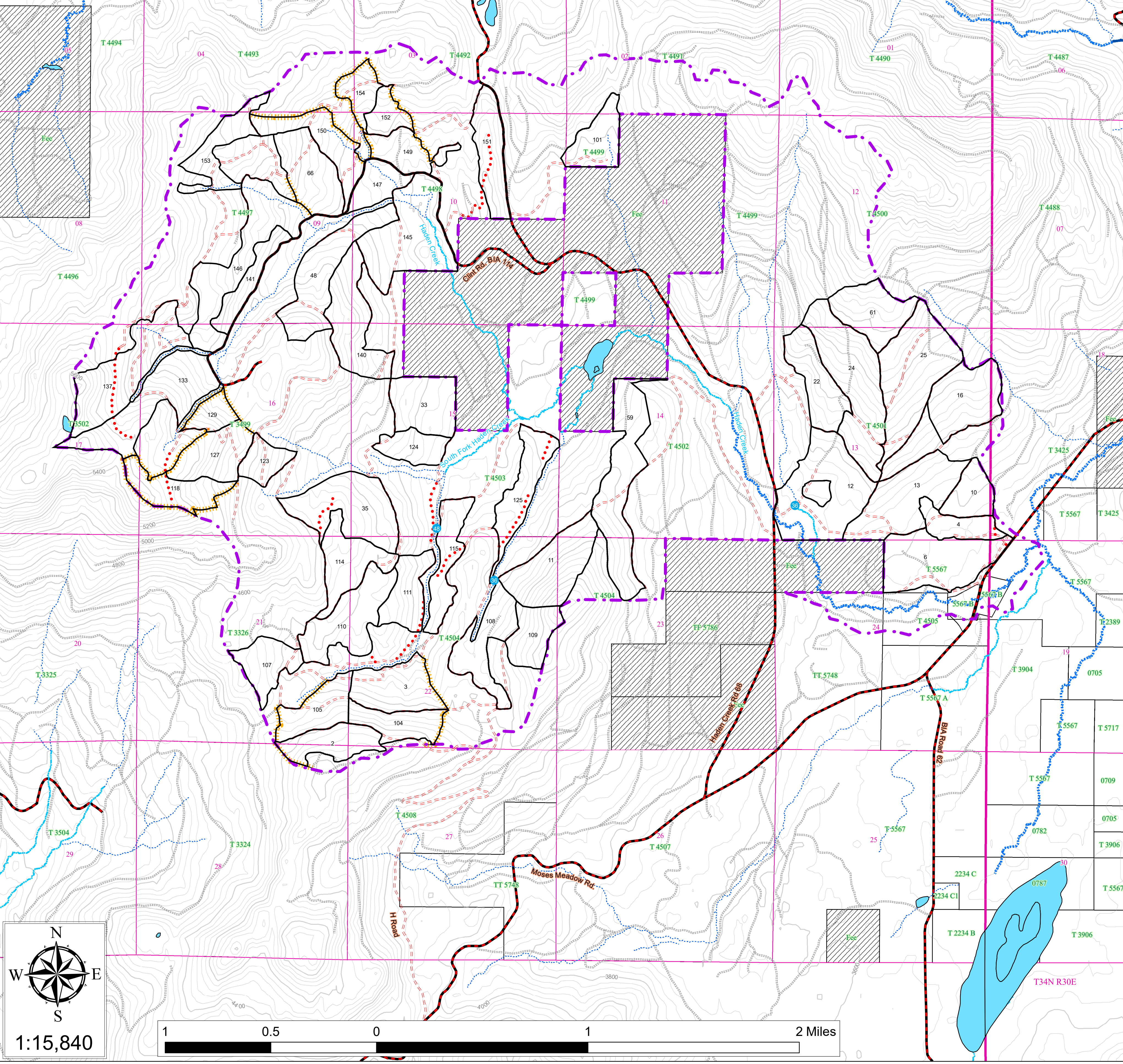


Haden Creek L.U. 318 Exhibit 'A' map



Legend

- Boundary**
 - 2 Blocks
 - 19 Sections
- Roads**
 - BIA
 - County
 - Existing
 - INACTIVE
 - Proposed
 - Reconstruct
- Contours**
 - 200 ft.
 - 40 ft.
- Streams**
 - Type I
 - Type II
 - Type III
 - Type IV
- Lakes**
- Ownership**
 - 5567-B Allotment Trust
 - Fee Private Fee
 - TF 5786 Tribal Fee
 - T 3904 Tribal Trust
 - Fireline
 - Culverts larger than 24"



Haden Creek Exhibit C Activity Table

Comp	Block	Acres	Treatment	Skid System	Tractor	Whole Tree	Lop and Scatter	Slash	Fireline ft.	Excavator	Broadcast Burn	Remarks
161	2	38.6	RRT			yes		38.6	1,252.6		38.6	
161	3	53.5	RRT			yes		53.5	1,562.9		53.5	
162	4	27.1	OR			no	27.1					
162	6	81.1	SW			yes	81.1					
162	10	29.0	ST/OR			no	29.0					
161	11	67.7	ST			yes	67.7					Seasonal - Winter Dry
162	12	98.6	CT			no	98.6					
162	13	79.1	SW			yes	79.1					
162	16	59.9	SW			no	59.9					
162	22	48.0	SW			yes	48.0					
162	24	101.8	SW			yes	101.8					
162	25	98.6	SW			yes	98.6					
161	33	51.0	ST/OR			no	51.0					
161	35	78.5	IC			yes	78.5					
161	48	71.6	OR			no	71.6					Seasonal - Winter
157	59	90.8	SW			yes				90.8		
162	61	51.1	SW			yes	51.1					
161	66	55.6	ST			yes		55.6	1,252.5		55.6	
162	101	36.2	OR			yes						
161	104	35.3	RRT			yes		35.3	1,262.1		35.3	
161	105	40.4	RRT			yes		40.4	2,008.1		40.4	
161	107	35.6	ST			yes				35.6		
161	108	51.4	Sani			yes	51.4			51.4		
161	109	35.0	no			no	35.0			35.0		Seasonal - Winter Dry
161	110	65.6	SW			yes				65.6		
161	111	37.8	ST			no				37.8		
161	114	49.2	ST/OR			no	49.2					
161	115	40.7	ST			yes				40.7		
161	118	41.6	SW			no		41.6	6,049.1		41.6	Seasonal - Winter
161	123	22.7	OR			no	22.7					
161	124	27.3	ST/OR			no	27.3					
161	125	46.0	ST			yes				46.0		
161	127	47.2	ST			no		47.2	2,108.9		47.2	Seasonal - Winter
161	129	18.4	SW			optional		18.4	2,533.0		18.4	Seasonal - Winter
161	133	82.9	SW			yes				82.9		Seasonal - Winter
161	137	85.2	Sani			yes				85.2		Seasonal - Winter
161	140	65.8	SW			yes	65.8					Seasonal - Winter
161	141	28.8	SW			no				28.8		Seasonal - Winter
161	145	91.7	Sani			yes				91.7		
161	146	88.1	Sani			yes				88.1		
161	147	27.2	SW			no				27.2		
161	149	32.8	ST			no		32.8	1,763.9		32.8	
161	150	46.8	SW			no		46.8	3,662.4		46.8	
161	151	46.1	IC			yes				46.1		
161	152	20.1	ST			no		20.1	1,530.1		20.1	
161	153	39.6	IC			yes				39.6		
161	154	23.7	ST			no		23.7	3,332.1		23.7	
Totals		2,491.1					1,194.7	454.1	28,318.8	892.6	454.1	

CT - Commercial Thin
 IC - Improvement Cut
 Sani - Sanitation/ Salvage
 OR - Overstory Removal
 ST - Seed Tree
 ST/OR - Seed Tree / Overstory Removal
 SW - Shelterwood
 RRT - Regeneration with Reserve Trees

Seasonal
 Winter - December - February
 Summer - June - August
 Winter / Dry - December - February / July - September
 Winter and Dry are for soil protection