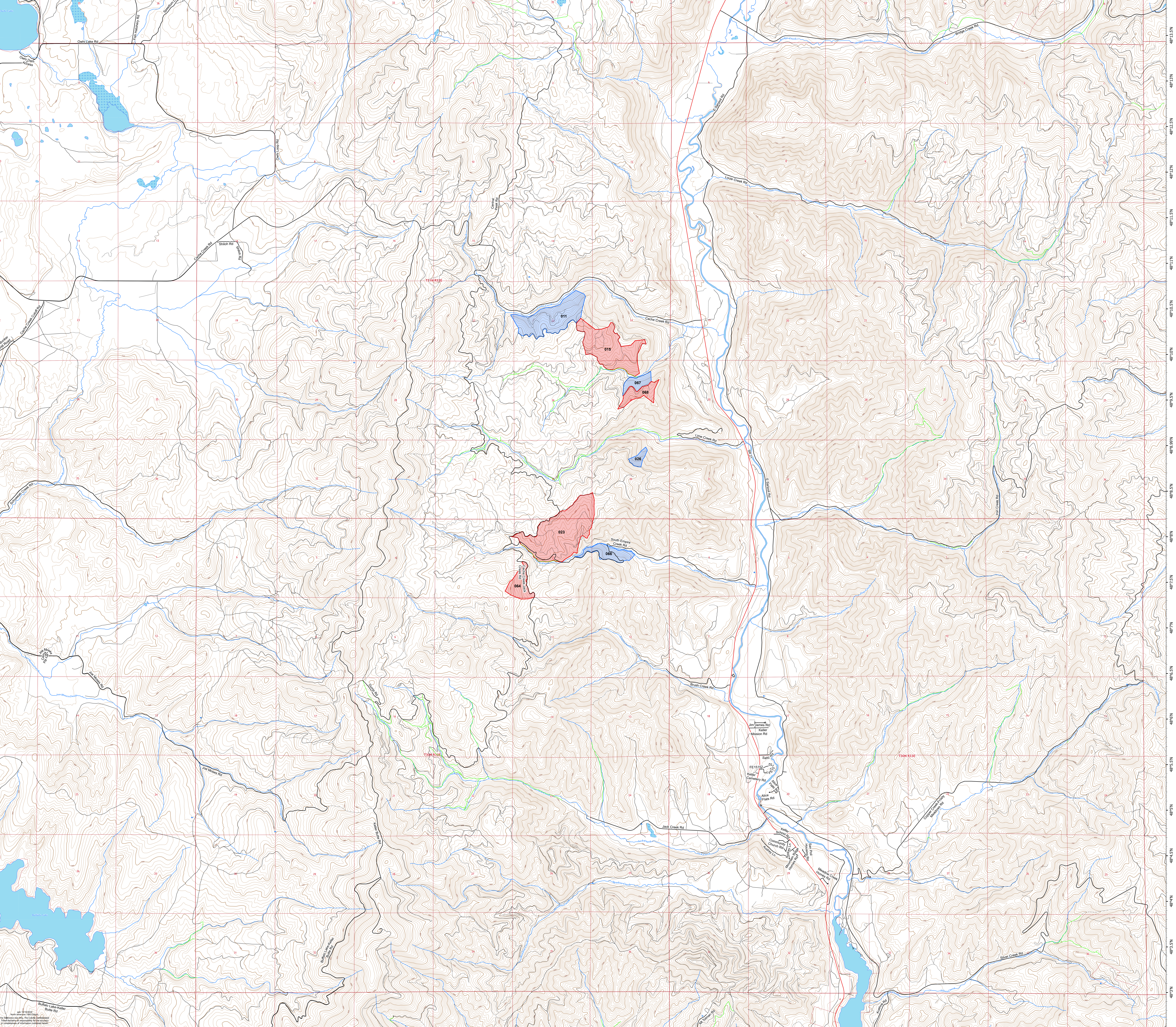


FY23 Fuels Activity

Mount Tolman Fire Center

Cache Creek

- US Highway
- State Highway
- Primary Road
- Secondary Road
- Other Road
- Revised Road (Permanent Action)
- Temporary Closure (Temporary Action)
- Unimproved Road
- Boundary Reversion
- Boundary Run
- Pile Burn



118°53.5'W 118°53'W 118°52.5'W 118°52'W 118°51.5'W 118°51.01'W 118°50.5'W 118°50'W 118°49.5'W 118°49'W 118°48.5'W 118°48'W 118°47.5'W 118°47'W 118°46.5'W 118°46'W 118°45.5'W 118°45'W 118°44.5'W 118°44'W 118°43.51'W 118°43'W 118°42.5'W 118°42'W 118°41.5'W 118°41'W 118°40.5'W 118°40'W 118°39.5'W 118°39'W 118°38.5'W 118°38'W 118°37.5'W 118°37'W 118°36.5'W 118°36.01'W 118°35.5'W 118°35'W

48°13.5'N 48°13'N 48°12.5'N 48°12'N 48°11.5'N 48°11'N 48°10.5'N 48°10'N 48°9.5'N 48°9'N 48°8.5'N 48°8'N 48°7.5'N 48°7'N 48°6.5'N 48°6'N 48°5.5'N 48°5'N 48°4.5'N 48°4'N 48°3.5'N 48°3'N